

Specification Sheet



073.03.0001

**1200mm x 600mm
Mobile Workbench**

PRODUCT FEATURES

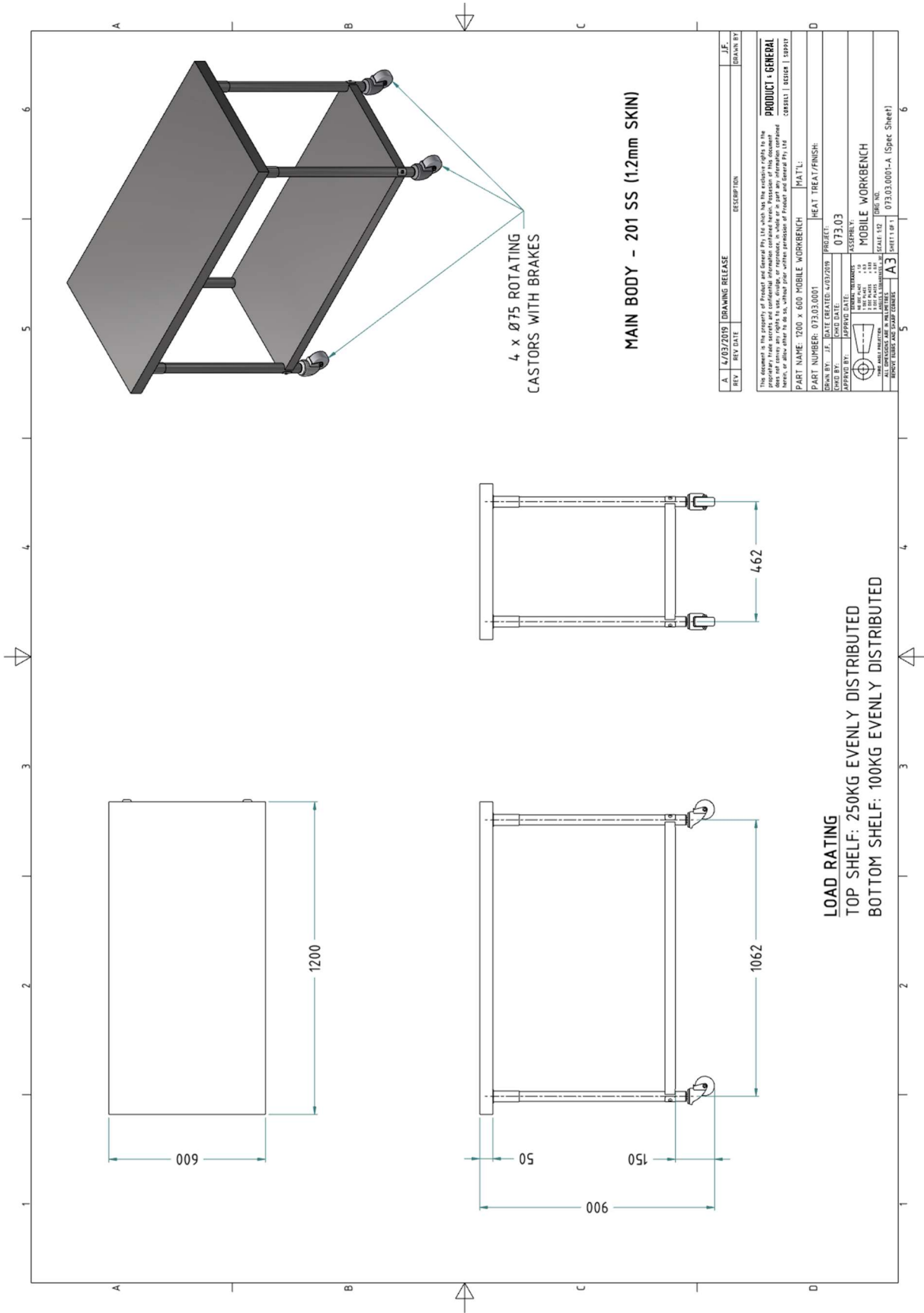
- Material – Stainless Steel
- Colour – Brushed Stainless
- MDF support underneath top shelf
- 4 Rotating Castors (2 with brakes)
- Load Rating
 - Top Shelf - 250kg Evenly Distributed
 - Bottom - 100kg Evenly Distributed

PACKAGE INFORMATION

- Flat Packed in Cardboard carton
- Carton Size (mm) - 1220mm x 620mm x 200mm
- Pieces per Carton – 1

PRODUCT & GENERAL

CONSULT | DESIGN | SUPPLY



REV	REV DATE	DESCRIPTION	DRAWN BY
A	1/03/2019	DRAWING RELEASE	J.F.

This document is the property of Product and General Pty Ltd which has the exclusive rights to the proprietary trade secrets and confidential information contained herein. Possession of this document is restricted to the use intended hereon, and shall remain the property of Product and General Pty Ltd. No part of this document may be reproduced, stored in a retrieval system, or transmitted in any form or by any means, electronic, mechanical, photocopying, recording, or otherwise, without the prior written permission of Product and General Pty Ltd.

PART NAME: 1200 x 600 MOBILE WORKBENCH MAT'L: HEAT TREAT/FINISH:
 PART NUMBER: 073.03.0001 PROJECT: MOBILE WORKBENCH
 DESIGNED BY: J.F. DATE CREATED: 1/03/2019 PROJECT: 073.03
 APPROVED BY: J.F. DATE APPROVED: 1/03/2019 PROJECT: 073.03
 SHEET NUMBER: 1 OF 3 SHEET TITLE: MOBILE WORKBENCH
 SHEET SCALE: 1:100 SHEET SIZE: A3
 SHEET OF: 1 PART NUMBER: 073.03.0001-A (Spec Sheet)

LOAD RATING
 TOP SHELF: 250KG EVENLY DISTRIBUTED
 BOTTOM SHELF: 100KG EVENLY DISTRIBUTED